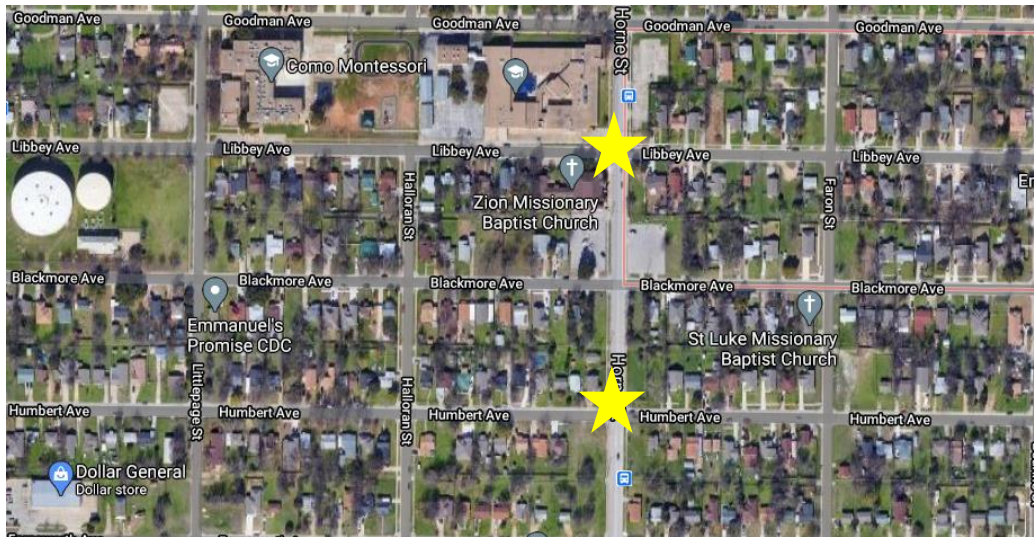


PROJECT NAME: HORNE STREET
 PROJECT ARTIST: DARRYL RATCLIFF
 CURRENT PHASE: PRELIMINARY DESIGN

Horne Street Public Art Project Outline



As part of the 2018 Bond Program, the City of Fort Worth is making improvements along Libbey Avenue and Humbert Avenue (District 3). The project sites each extend to the intersection of Horne Street, which is considered “Main Street” in the Como Community. Two schools, Como Montessori and The Como Leadership Academy, are located off Horne Street on Libbey Avenue. The new Como Community Center is also located on Horne Street a few blocks south of Humbert Avenue. As a high traffic area, this location was identified as an impactful place for public art in the *Fort Worth Public Art Plan for the 2018 Bond Program*. In addition to this improvement, a Horne Street Revitalization Project is now underway through other funding sources, inclusive of the specified intersections.

PUBLIC ART SITE AND APPROACH

This public art project provides an opportunity for one lead artist* to create a unique, artistic experience along Horne Street near the intersections of Libbey Avenue and Humbert Avenue. The two neighborhood streets are separated by 0.1 mile (a 2-minute walk). Overall, the participatory artwork should be highly visible from a distance, create a layered experience, and connect the present-day diverse community to the area’s roots. At their orientation meeting on April 12, 2021, the Core Team stated a desire for an artwork that echoes the vibrancy of Horne Street’s past while reflecting the 24-hour life of today’s Como “Main Street.” They also discussed the potential for the work to tie in with other public art pieces in the community.

**The Project Core Team envisions a hands-on artwork process that acts as a catalyst for young local artists and furthers community togetherness. The lead artist shall act as a mentor to invited local artists within the community to help them gain experience in public art. Additionally, with the assistance of local artists, the production of the artwork shall involve wide-reaching community participation. The lead artist will determine the overall design and integration of artwork into the streetscape, appropriate for the site.*